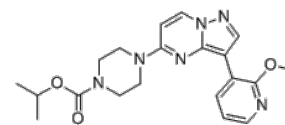


**Product Name** : LP-935509  
**Cat. No.** : PC-60635  
**CAS No.** : 1454555-29-3  
**Molecular Formula** : C<sub>20</sub>H<sub>24</sub>N<sub>6</sub>O<sub>3</sub>  
**Molecular Weight** : 396.451  
**Target** : AP2-associated Kinase 1 (AAK1)  
**Solubility** : 10 mM in DMSO



### Biological Activity

LP-935509 is a potent, selective and brain-penetrant adapter protein-2 associated kinase 1 (**AAK1**) inhibitor with IC<sub>50</sub> of 3.3 nM.

LP-935509 inhibited  $\mu$ 2 protein phosphorylation in HEK293 cells overexpressing human AAK1 with IC<sub>50</sub> of 2.8 nM.

LP-935509 also potent inhibits closely related BIKE and GAK with IC<sub>50</sub> of 14 nM and 320 nM, respectively in a panel of 389 kinases.

LP-935509 reduces pain response in phase II formalin and reverses fully established pain behavior in vivo.

### References

Kostich W, et al. *J Pharmacol Exp Ther*. 2016 Sep;358(3):371-86.

Louis JV, et al. *Neuropharmacology*. 2017 May 15;118:167-174.

**Caution: Product has not been fully validated for medical applications. Lab Use Only!**

E-mail: tech@probechem.com